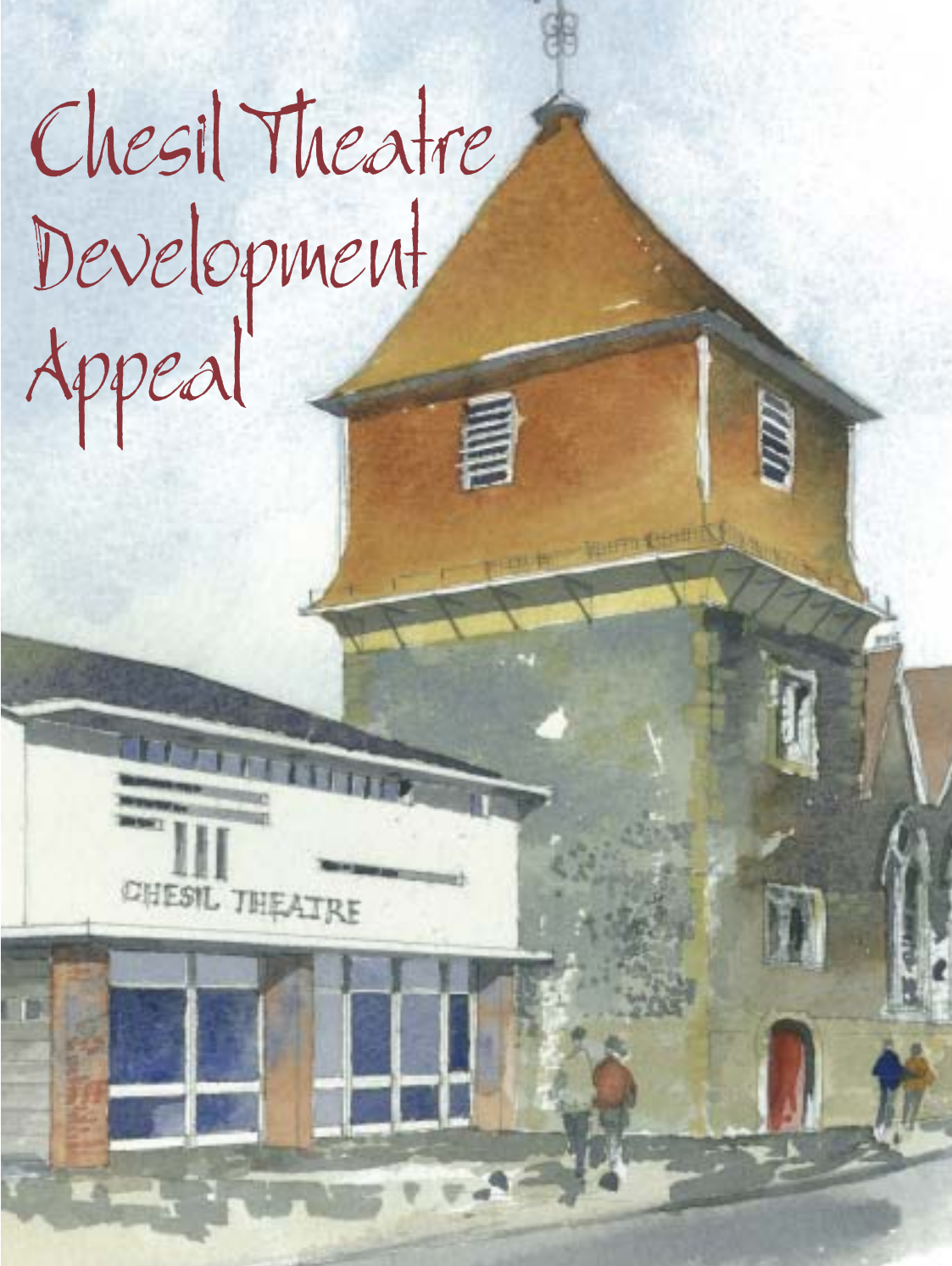


# Chesil Theatre Development Appeal



Chesil Theatre is the home of Winchester Dramatic Society, a registered charity No. 285043

Appeal enquiries to 01962 855544 • [appeal@chesiltheatre.org.uk](mailto:appeal@chesiltheatre.org.uk) • [www.chesiltheatre.org.uk](http://www.chesiltheatre.org.uk)

# Make this dream become a reality

**W**e need to raise £990,000 to fulfil this ambitious aim and create a new arts venue at the Chesil which will benefit all of the community and ensure the well being of one of Winchester's most loved buildings.

Much of this sum is being sought from grant issuing bodies. The rest we are raising ourselves. There are many ways you can help –

## **Individuals can:**

- Become a Friend of the Chesil
- Make a single donation, regular gifts or leave a legacy
- Support our fund-raising events
- Make available an interest-free loan

## **Businesses and Organisations can**

- Become a Corporate Partner
- Donate goods and services on our shopping list
- Acquire title sponsorship to new parts of the building
- Sponsor a production or advertise in our programmes





# THE CHESIL THEATRE HAS A UNIQUE OPPORTUNITY TO CREATE AN EXCITING NEW VENUE FOR THE ARTS IN WINCHESTER

## *What we do now*

- ◆ Present six major productions a year, from farce to tragedy, classics to new drama
- ◆ Run two Youth Theatre groups for members between the ages of 9 and 18
- ◆ Provide lively and cultural activities for people of all ages interested in theatre
- ◆ Offer training in technical workshops
- ◆ Care for our superb Listed Building, the 12th century Church of St Peter

## AND IF WE HAVE MORE SPACE . . .

## *This is what we want to do*



- ◆ Mount more productions to give extra opportunities to directors, performers and backstage crew to take an active part in the arts
  - ◆ Expand our Youth Theatre groups to give our young members the chance to mount their own productions.
  - ◆ Extend our programme to bring even more entertainment to the community
  - ◆ Build on our excellence by organising drama and writing workshops, play readings, individual coaching and developing our in-house training for technical skills
  - ◆ Encourage the disabled to participate with better access and facilities
  - ◆ Provide daytime theatre-related, leisure interests for the active elderly
- ◆ Enhance this area of our City for the benefit and pleasure of residents and visitors
  - ◆ Provide a venue which will extend our ability to accept small scale touring productions, and support other Winchester arts groups, schools and community organisations

*Now we have the chance . . . but we need your help*



# More opportunities for everyone

Our Youth Theatre groups give young people the opportunity not only to learn stage and technical proficiency, but also to develop confidence and their social, spatial and personal skills. Our main programme often presents roles for children on stage. *Cider with Rosie*, *The Prime of Miss Jean Brodie*, *Cold Comfort Farm*, *She Stoops to Conquer*, *A Day in the Death of Joe Egg*, *Shadowlands* and *Tom's Midnight Garden* are recent examples where young talent has been able to flower.

Young members are encouraged to take on major backstage roles. These are invaluable in learning how to become a responsible member of a team. Some of our 'graduates' have gone on to specialise in the arts at college or university, where their grounding at the Chesil has proved of real benefit. At present the operation of the Youth Theatre is limited in size and scope: the development would enable this vital area to be expanded.



Talent isn't purely the province of the young. Indeed the age range of Chesil members runs from eight up to those well into their eighties.

We know, too, that many retired and semi-retired people in the community have skills and expertise which can be used in the theatre. The development would enable us to establish regular daytime sessions - sewing/maintaining the wardrobe, building sets, creating publicity material, running the box office. With the new development we would have room for all these activities, with refreshment and seating areas to ensure a friendly, social ambience.

Providing complete facilities for the disabled has never been easy in our medieval building, although wheelchair users can be accommodated in the front row. We have also installed an infra-red loop system for the hard of hearing and closed circuit television equipment for described performances. A further programme of improvements is in place.

The development would enable us to comply fully with the Disability Discrimination Act with improved access and dedicated cloakrooms.

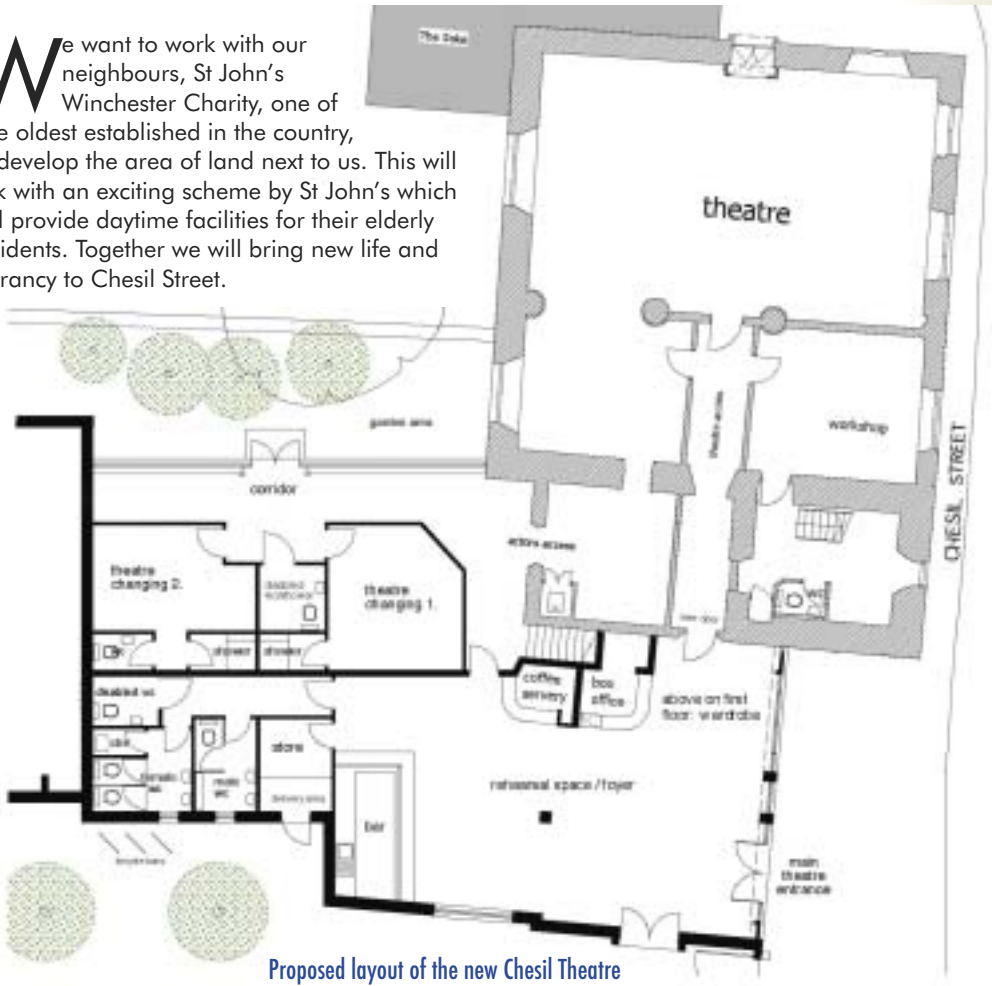


Now we have the chance . . . but we need your help



# Building for the future

We want to work with our neighbours, St John's Winchester Charity, one of the oldest established in the country, to develop the area of land next to us. This will link with an exciting scheme by St John's which will provide daytime facilities for their elderly residents. Together we will bring new life and vibrancy to Chesil Street.



Proposed layout of the new Chesil Theatre

Our intimate auditorium will remain the same but with the development we can offer:

- ◆ A multi-purpose foyer and bar – for exhibitions, meetings, rehearsals
- ◆ Enhanced facilities for the disabled
- ◆ Studio-style performance area/rehearsal room
- ◆ Extended set construction and technical workshop space
- ◆ New wardrobe storage with hire facilities, easily accessed by the public
- ◆ Much better dressing rooms and backstage areas
- ◆ Improved facilities and equipment throughout the theatre

